

WS6-LH

ANAFGROUP

Stored pressure

Water

6 L

Temperature ranges

0°C + 60°C



BODY

ALUMINUM

Seamless, deep drawn aluminum alloy body, ensures maximum sealing and, thanks to its light weight, perfect handling. Externally painted with polyester resin

VALVE

ALUMINUM

Squeeze grip lever operated valve with aluminum body. The shock-proof pressure gauge provides an accurate indication of the pressure status of the extinguisher

HOSE

The EPDM reinforced rubber hose guarantees perfect flexibility and resistance within the temperature range. Complete with nozzle

EXTINGUISHING AGENT

Three types of extinguishing agents:

- pure water
- water with additives, specially designed to fight class A fires (it does not contain fluorocarbons: it is fully biodegradable)
- water with top performing additives, fully biodegradable

PROPELLANT

The propellant gas is nitrogen. A small percentage of helium is added to allow electronic leak detection

STANDARD PACKAGING

Single piece cardboard box, robust and suitable for transport

Accessories

- Standard
- On request



WS6-LH



13

WS6-LHA



27

WS6-LHP



34

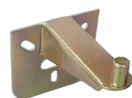
WEIGHT
Kg

7,70

DIMENSION
mm

160 Ø x 540

BRACKET



• Button holed wall bracket



○ Back hook wall bracket kit



○ Transport bracket



HOSE RINGS & PROTECTIVE BASE



• Hose holder 160mm



○ Protective base 160 mm

ADDITIONAL FEATURES



• One color screen printing



○ Two-color PVC label



○ Safety Valve LHZ

PACKAGING



• One-piece havana cardboard box



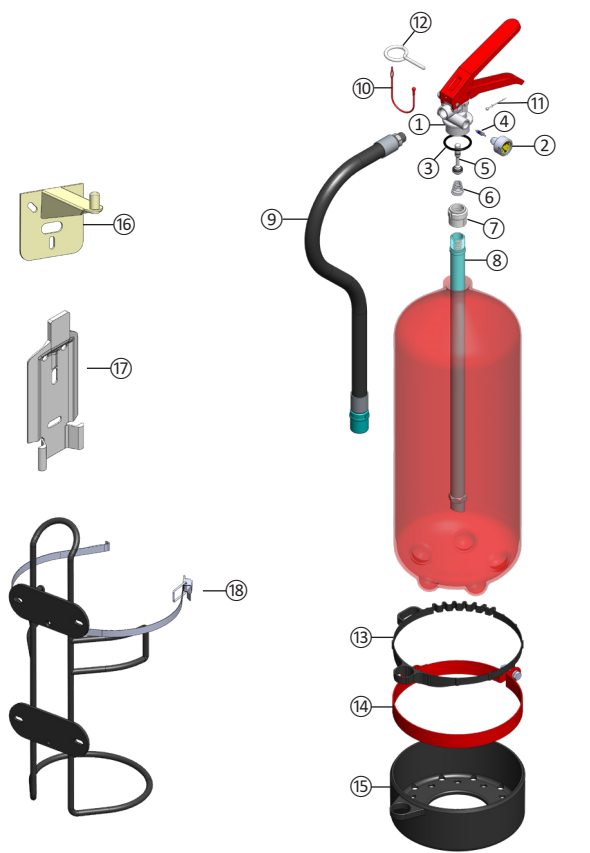
○ One-piece colored cardboard box

Technical data

FIRE RATINGS	WS6-LH	13A
	WS6-LHA	27A
	WS6-LHP	34A
CHARGE	6 l +0 / -5%	
CYLINDER	Manufacturing process	Deep drawing
	External painting	Polyester resin, minimum thickness 75 micron
	Corrosion resistance	480 h minimum according to ISO 9227:1990
HOSE	Reinforced rubber tube with nozzle	
	Overall length	565 mm
EXTINGUISHING AGENT	Water with additives	
PROPELLANT	Nitrogen or nitrogen + helium	
DISCHARGE	Discharge time	~ 38 s
PRESSURE	Operating pressure at 20 °C	11 bar
	Operating pressure at 60 °C	13 bar
	Operating pressure at 0 °C	9 bar
DIMENSIONS	Overall height	550 mm
	Bottle outer diameter	160 mm
WEIGHT	Empty / Charged	1,8 kg / 8,5 kg
PACKING SPECIFICATIONS	Standard packing	Single piece cardboard box
	Carton size (B x L x H)	180 x 175 x 590 mm
	Weight per carton	8,8 kg
	Pallet	81 cartons
	Pallet size (B x L x H)	800 x 1200 x 1670 mm
	Pallet volume	1,60 m ³
	Weight per pallet (net/gross)	713 kg / 733 kg

© REPRODUCTION IS FORBIDDEN

08.486E.01.04.2021



Nr.	Description	Code
1	Complete valve without pressure gauge	00.886E.8090.00
2	Pressure gauge	00.814E.4950.20
3	O-ring for the valve	00.033E.1100.01
4	Check valve type Schrader	00.886E.5100.00
5	Internal spindle with o-ring	00.886E.5030.00
6	Conical spring	00.886E.5200.00
7	Dip tube holder	00.886E.5810.00
8	Dip tube	00.886E.5900.00
9	Assembled hose	00.860E.2400.25
10	Red lace holder for safety pin	00.886E.6290.00
11	Safety seal	00.245E.5030.00
12	Metal safety pin	00.886E.5020.00
13	Hose holder Ø160	00.241E.2800.00
14	Metallic support Ø160	00.850E.2970.00
15	Plastic base Ø160 with hose holder	00.850E.7100.01
16	Button holed wall bracket	00.005E.2900.00
17	Hook wall bracket	00.005E.2950.00
18	Transport bracket Ø160	00.241E.2900.00

ANAFGROUP

Via del Commercio, 4 - Torre d'Isola (Pavia)
 Tel. 0382.4533 Fax. 0382.920279
 info@anaf.eu | www.anaf.eu